

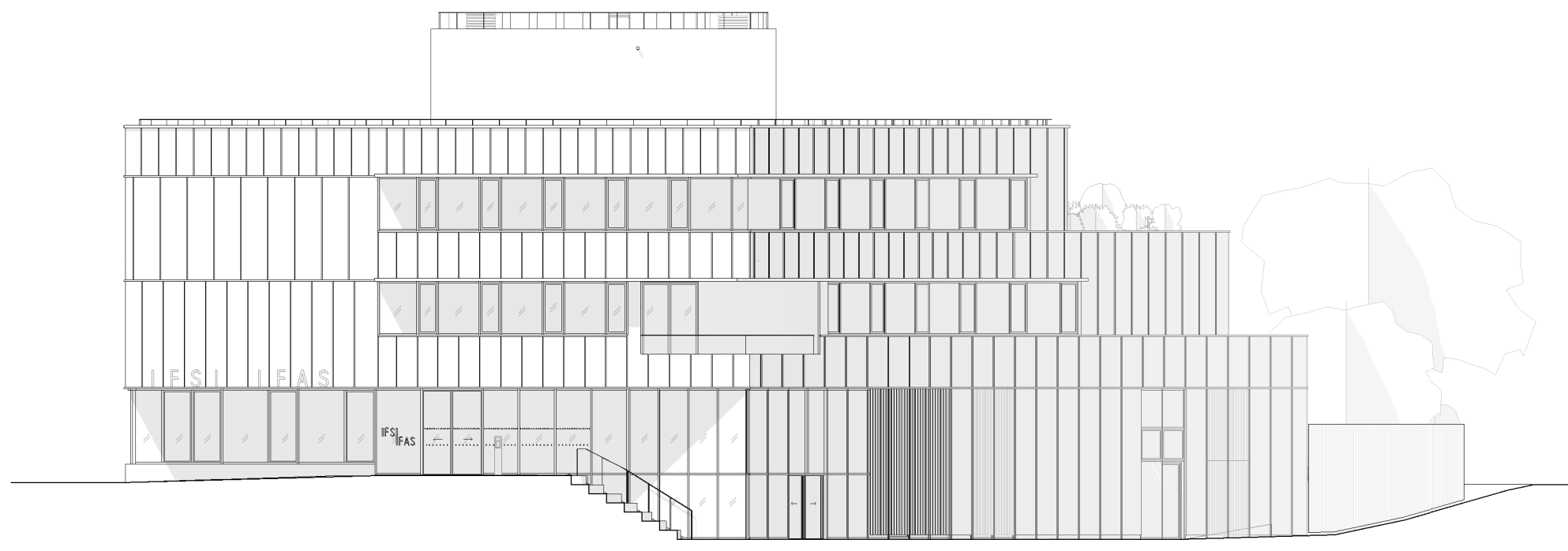
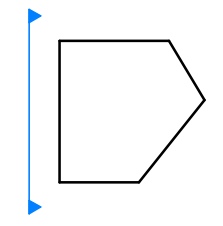
+46.50 NGF
+14.95 m
Acrotère édicule

+42.27 NGF
+10.72 m
E03

+38.75 NGF
+7.20 m
E02

+35.23 NGF
+3.68 m
E01

+31.55 NGF
+0.00 m
RDC



+46.50 NGF
+14.95 m
Acrotère édicule

+42.27 NGF
+10.72 m
E03

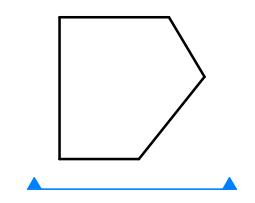
+38.75 NGF
+7.20 m
E02

+35.23 NGF
+3.68 m
E01

+31.55 NGF
+0.00 m
RDC

+29.40 NGF
-2.15 m
RDC bas

+31.55 NGF
+0.00 m
RDC



Façades

