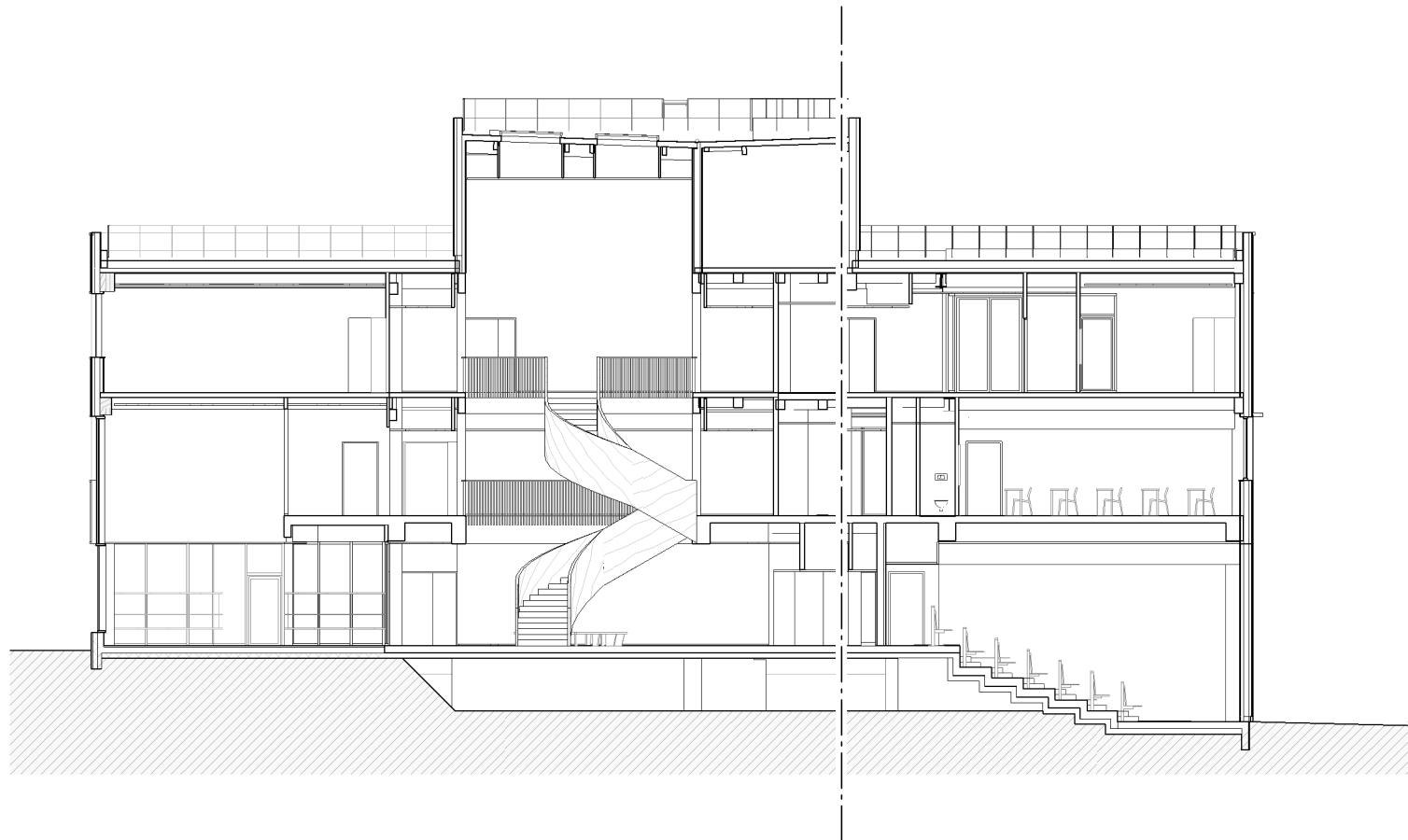
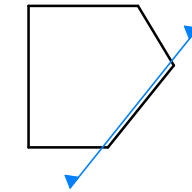
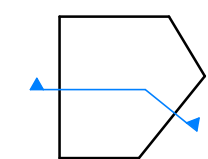


- +46.50 NGF
▽ +14.95 m
Acrotère édicule
- +42.27 NGF
▽ +10.72 m
E03
- +38.75 NGF
▽ +7.20 m
E02
- +35.23 NGF
▽ +3.68 m
E01
- +31.55 NGF
▽ +0.00 m
RDC
- +29.40 NGF
▽ -2.15 m
RDC bas



- +46.50 NGF
▽ +14.95 m
Acrotère édicule
- +42.27 NGF
▽ +10.72 m
E03
- +38.75 NGF
▽ +7.20 m
E02
- +35.23 NGF
▽ +3.68 m
E01
- +31.55 NGF
▽ +0.00 m
RDC
- +29.40 NGF
▽ -2.15 m
RDC bas



Coupes

