



Mai 2020

## Pièce complémentaire - Carnet de plans de niveaux - 100e

Affaire n° A294

Construction de 32 logements - Bd NEYMAN - Saint Nazaire  
Nantes [44]

MAGNUM Architectes & Urbanistes  
4, place Francois II - 44200 NANTES

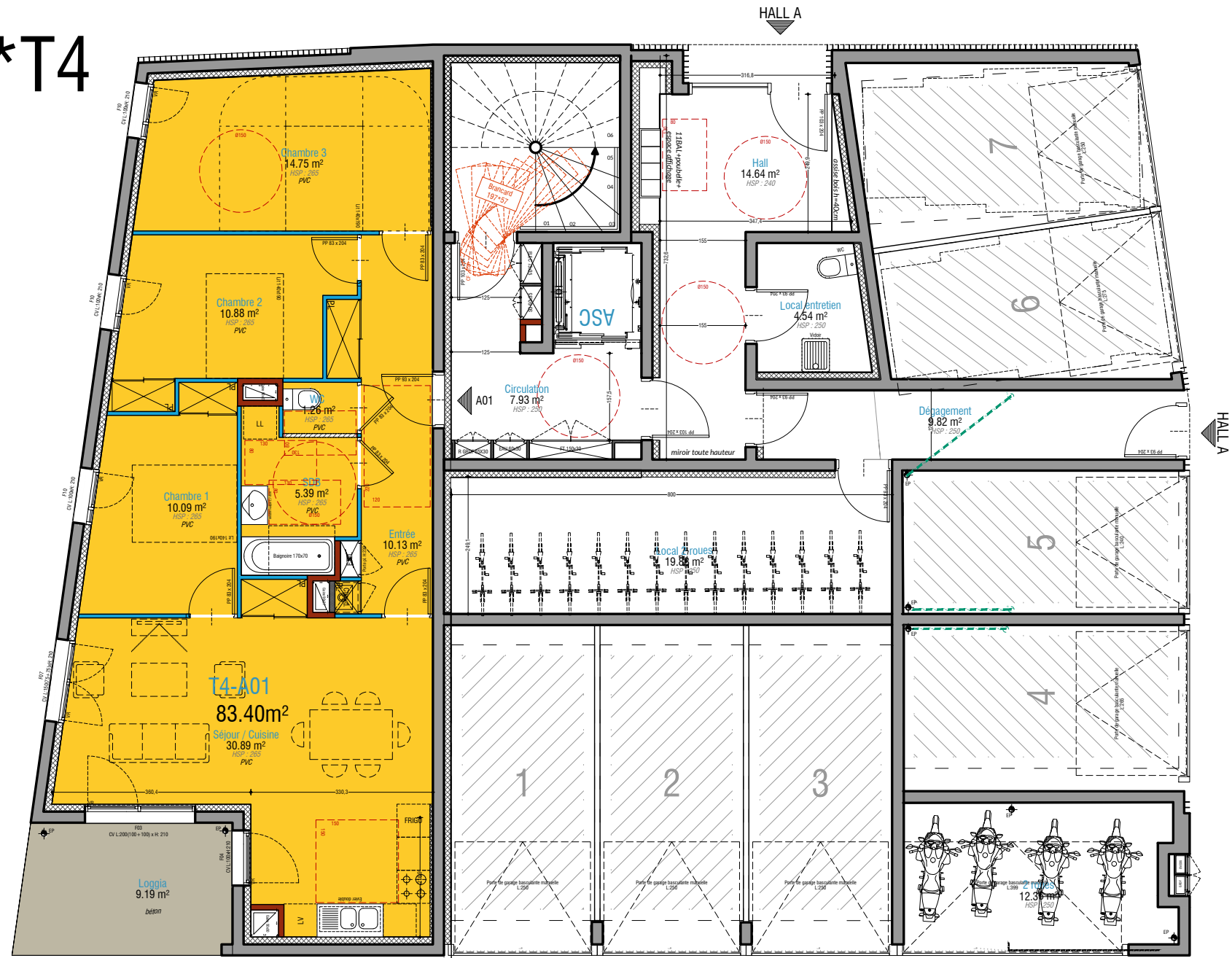
ECMS - Economiste  
44 rue de la Maladrie - 44120 Vertou

EVEN Structures  
5 rue des Petites Maulévries - BP 50714 - 49007 Angers

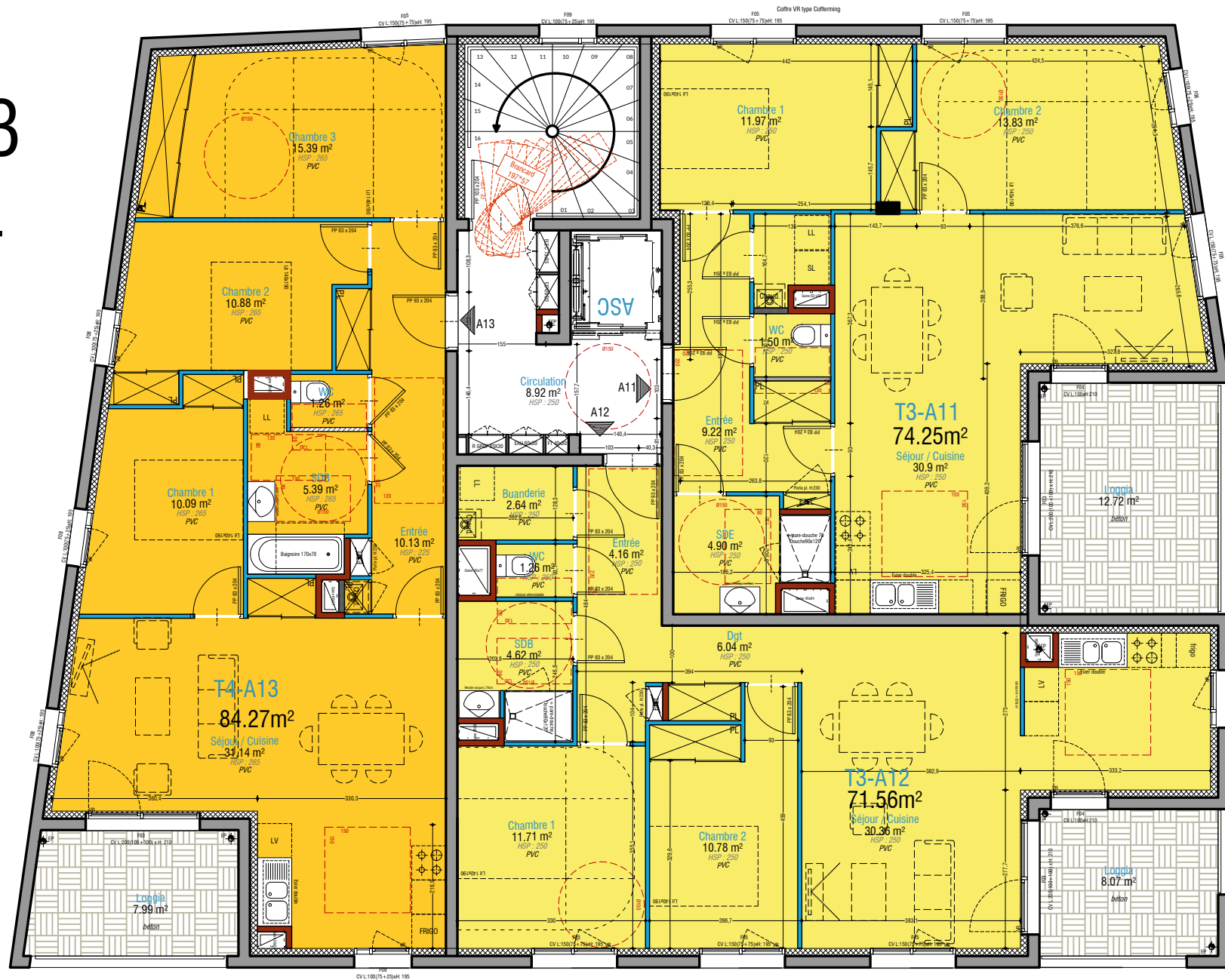
JOYEUX - BET Thermique et Fluides  
1 impasse du Mercantour - 44470 Thouaré sur Loire

A3Gi - BET VRD  
place de l'Europe - 44400 Rezé

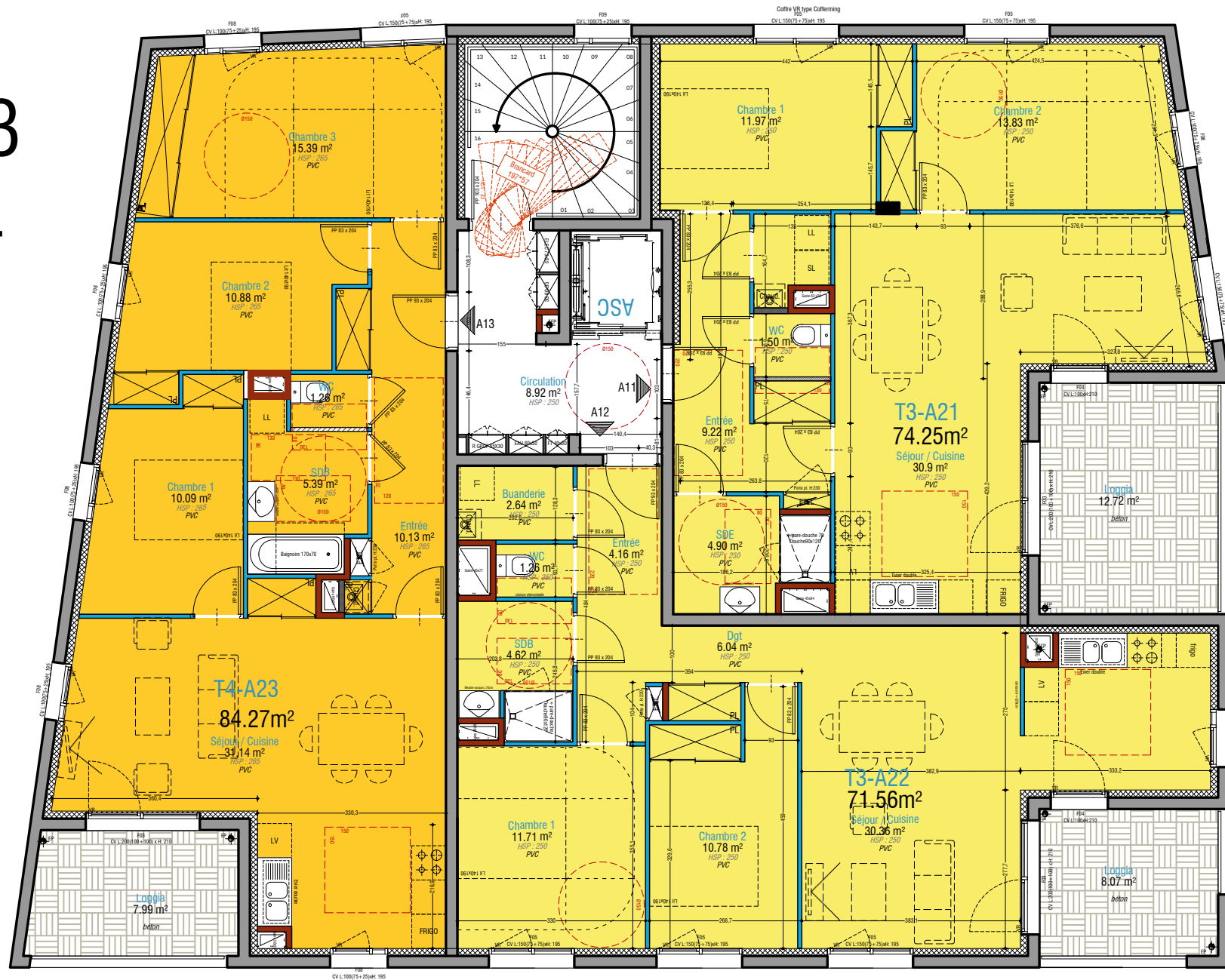
# RDC 1\*T4



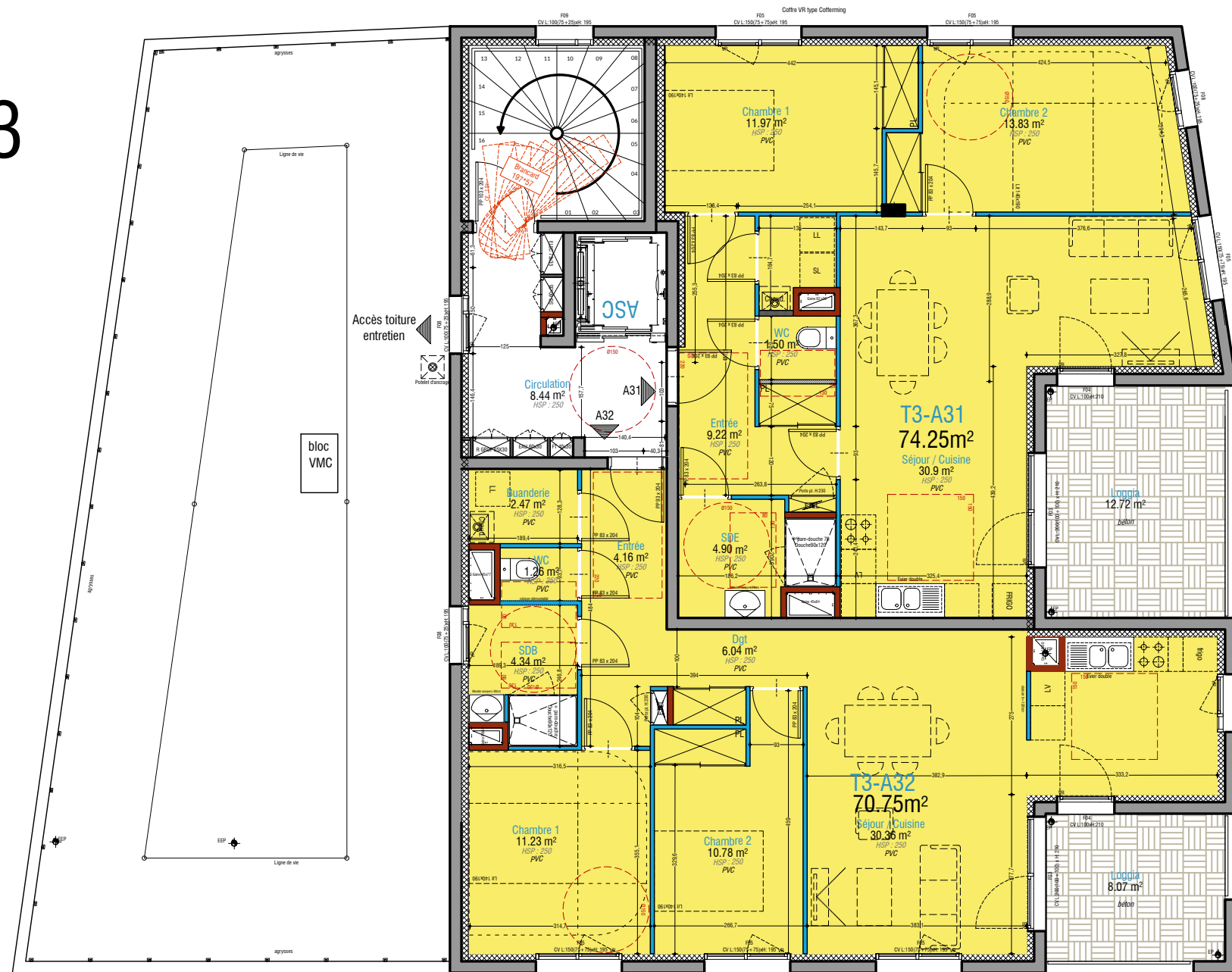
**R+1**  
**> 2\*T3**  
**1\*T4**



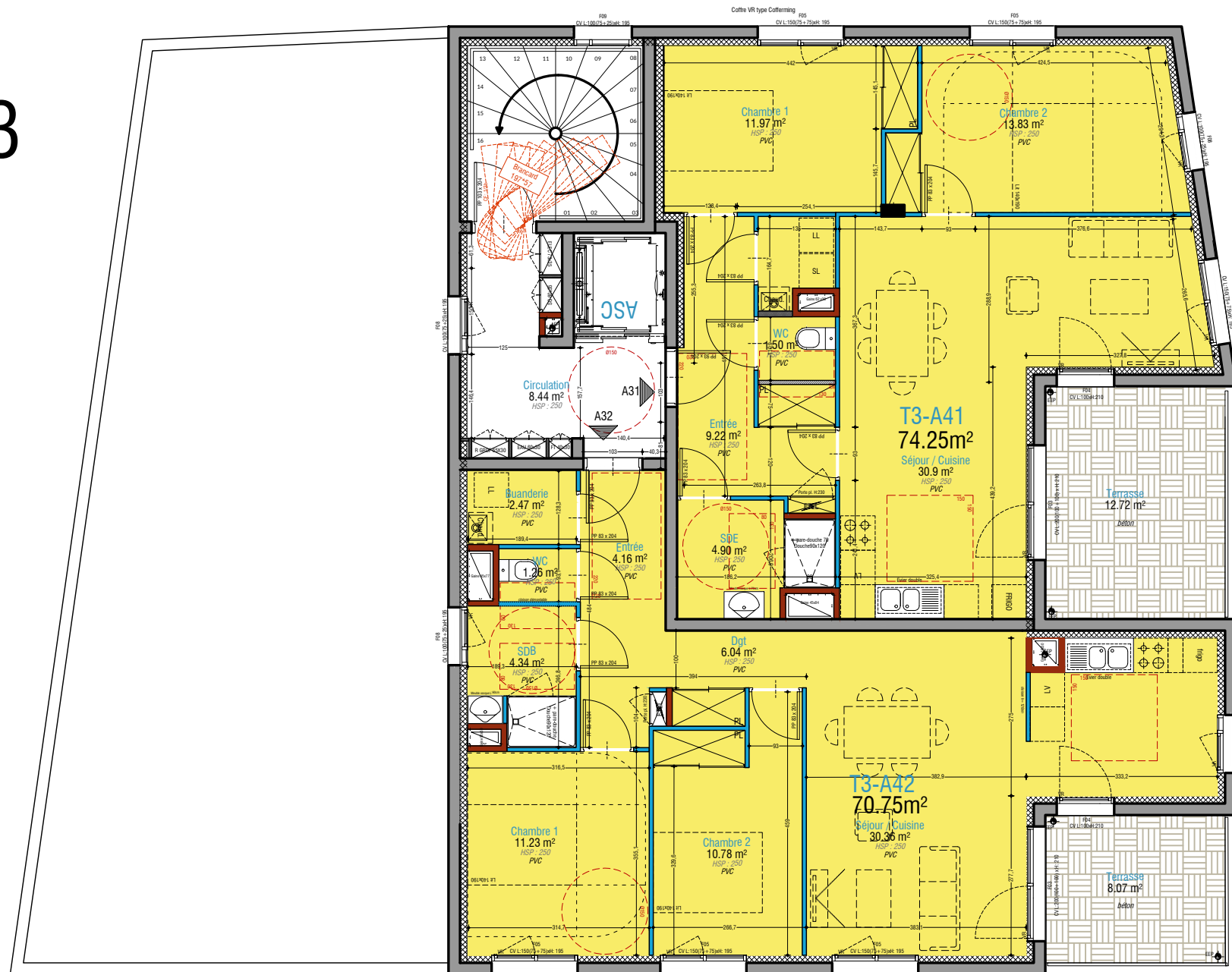
**R+2**  
 $> 2 * T3$   
 $1 * T4$



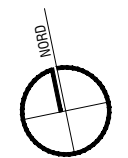
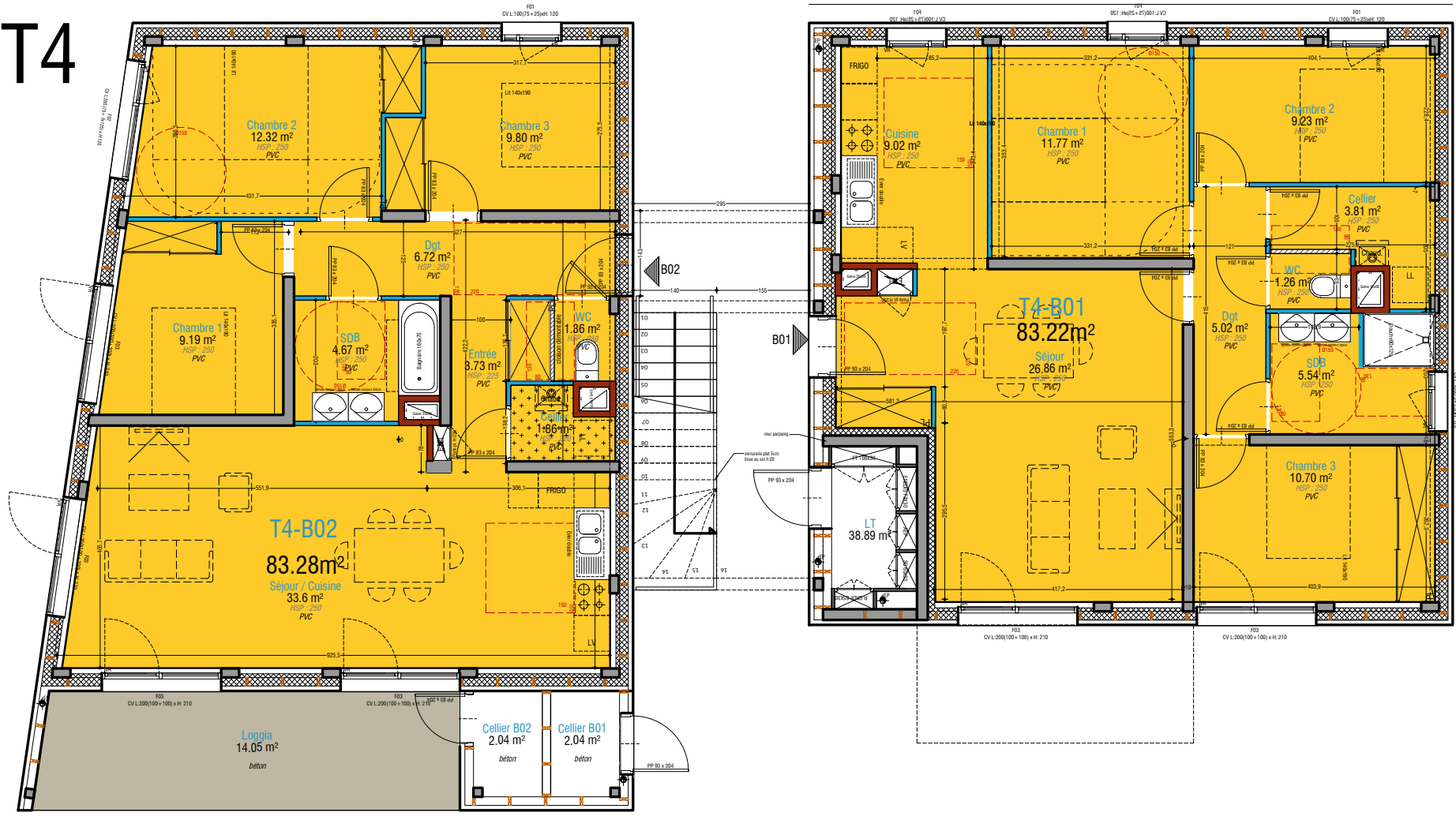
**R+3**  
 $> 2 * T3$



**R+4**  
**> 2\*T3**



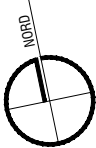
# RDC 2\*T4

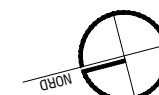
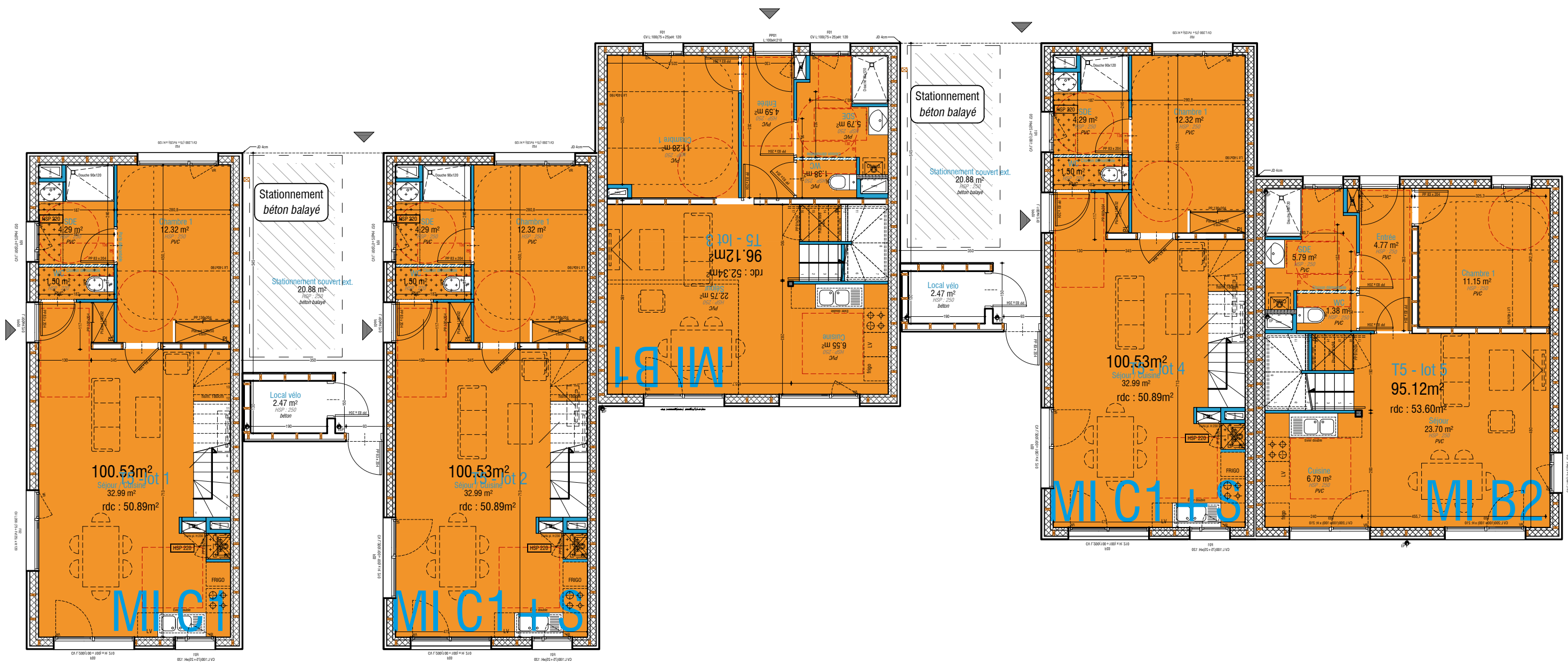


# R+1 2\*T4



# R+2 2\*T4





lot MI1 / plan rdc - ech: 1/100e



R+2 Partiel

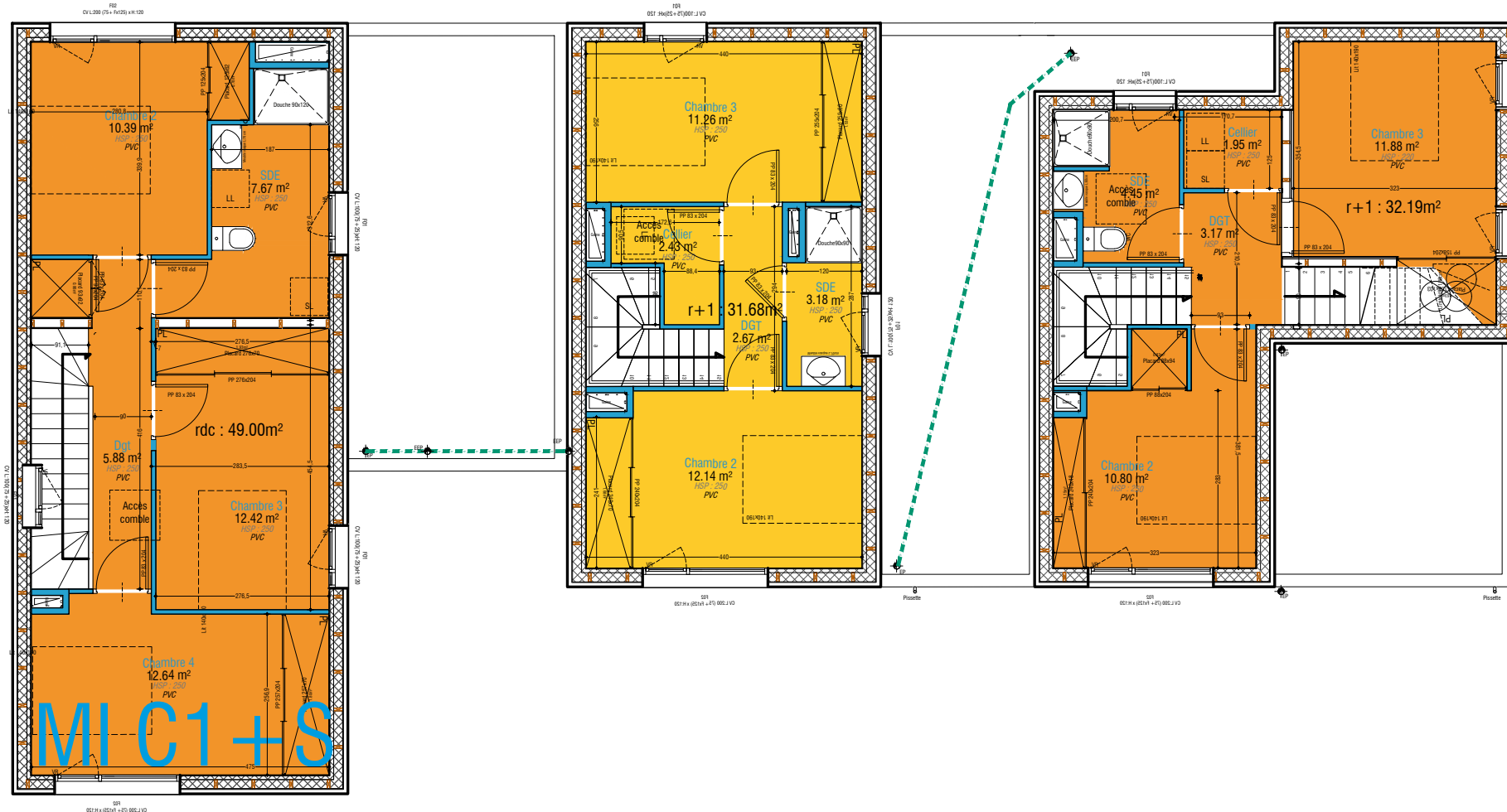
MIC1+S

MIC1

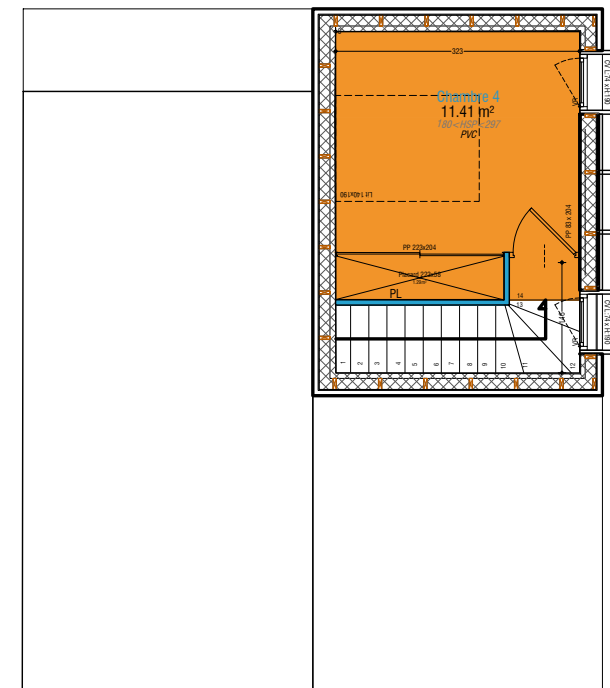
MIC1+S



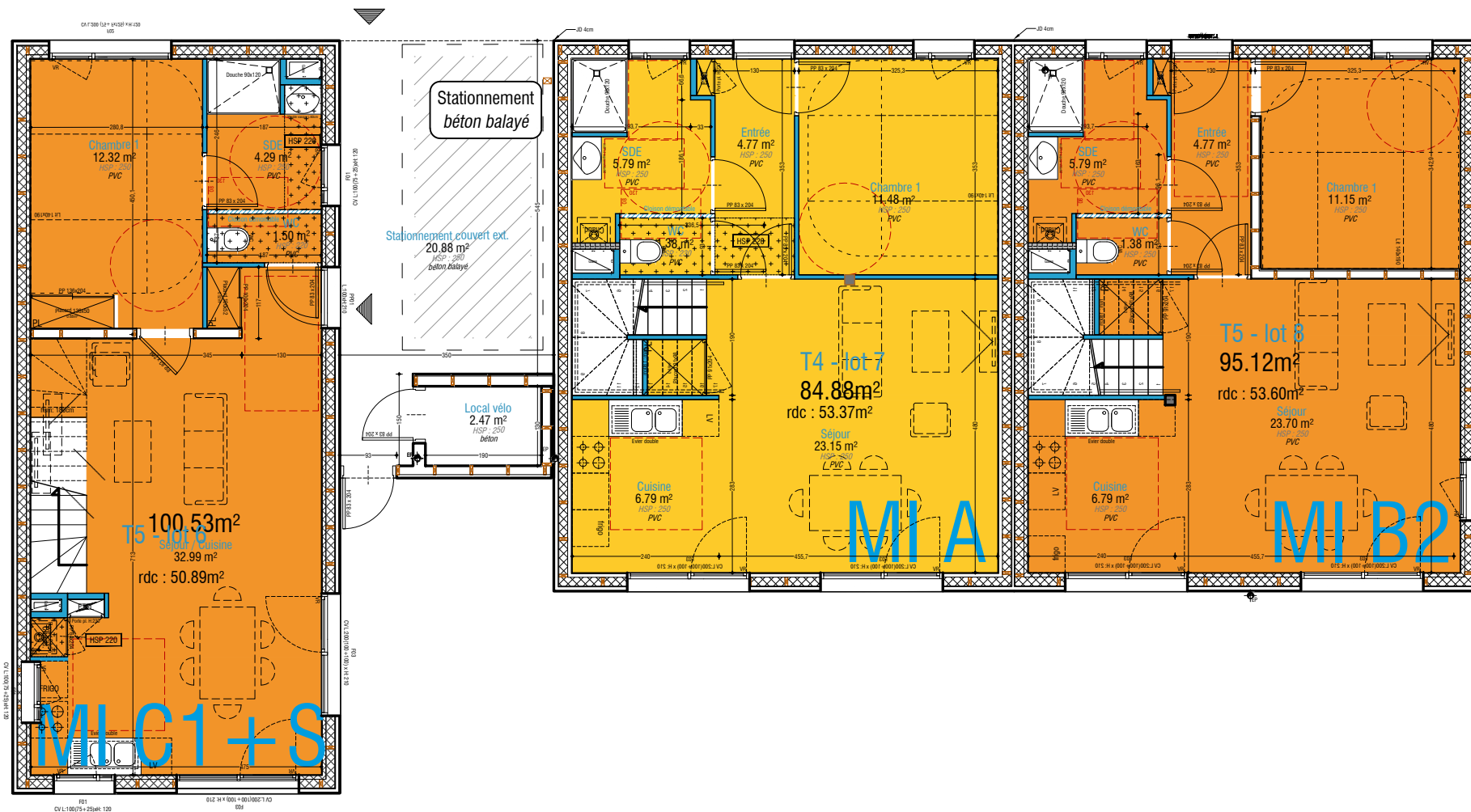
R+1



R+2 partiel

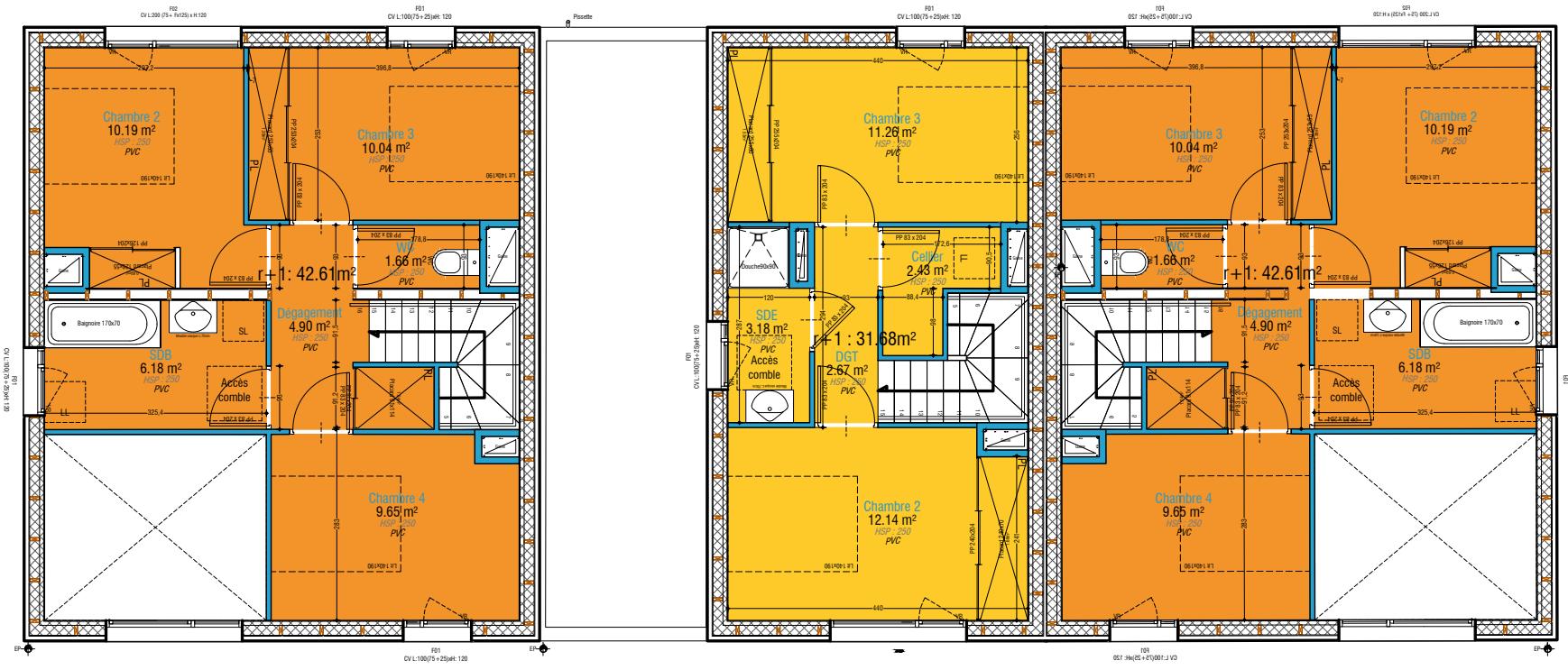


RDC

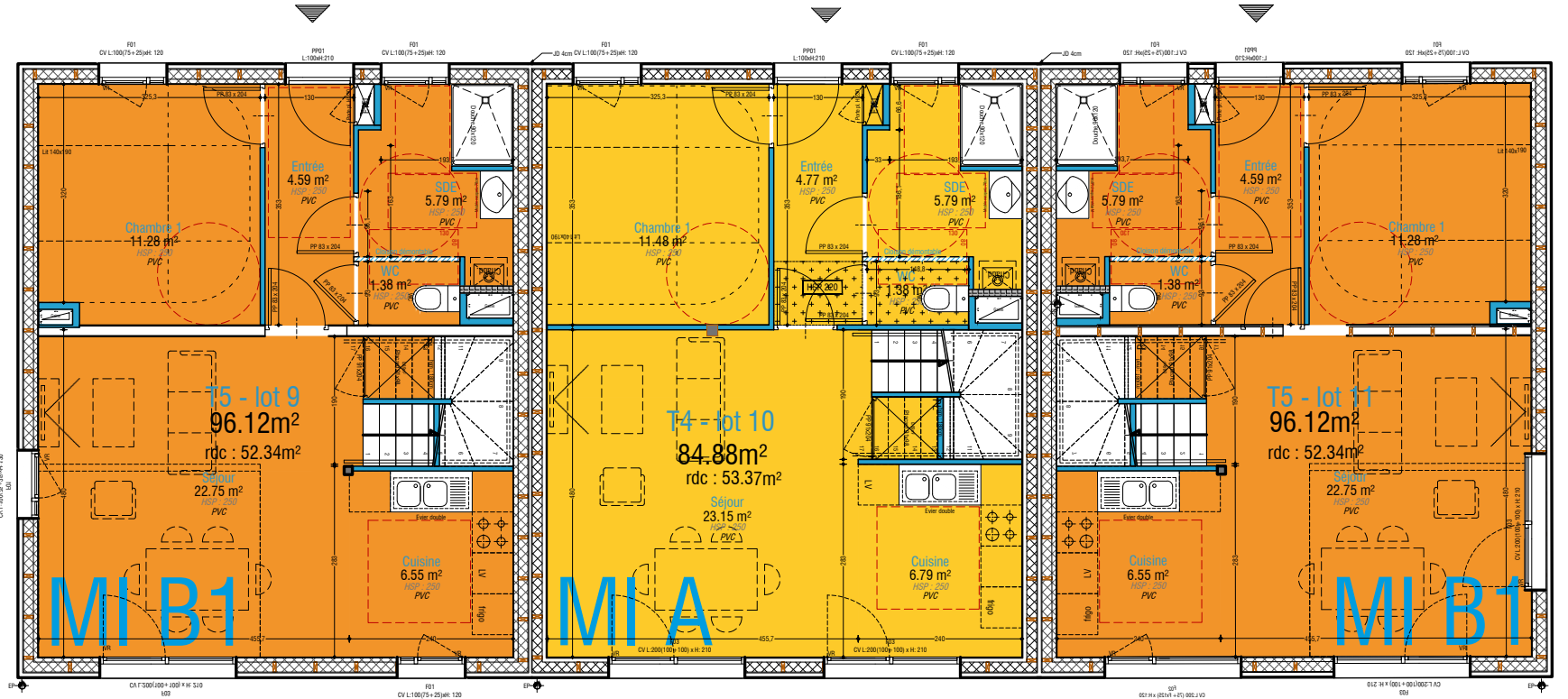


lot MI2 / plans de niveaux - ech: 1/100e

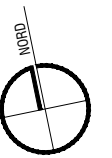




R+1

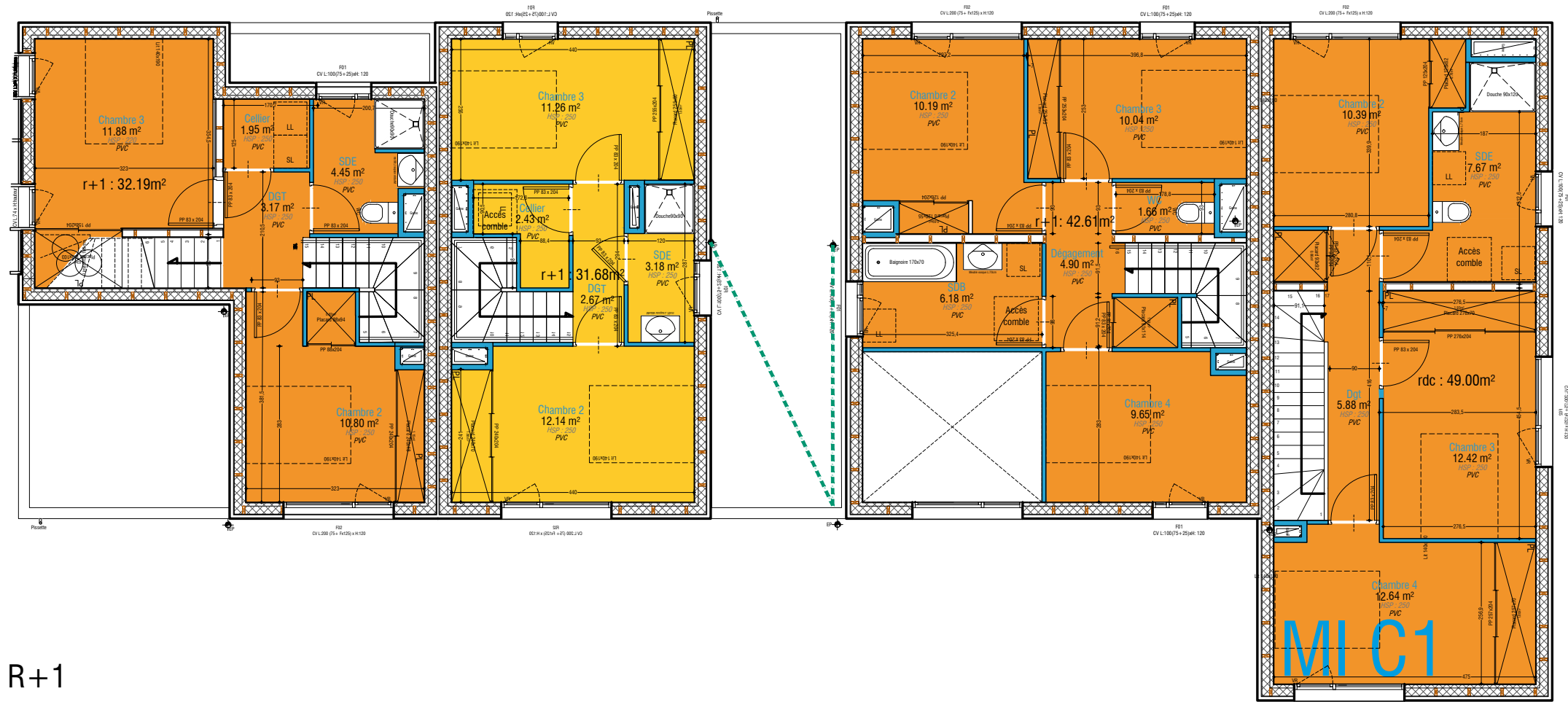
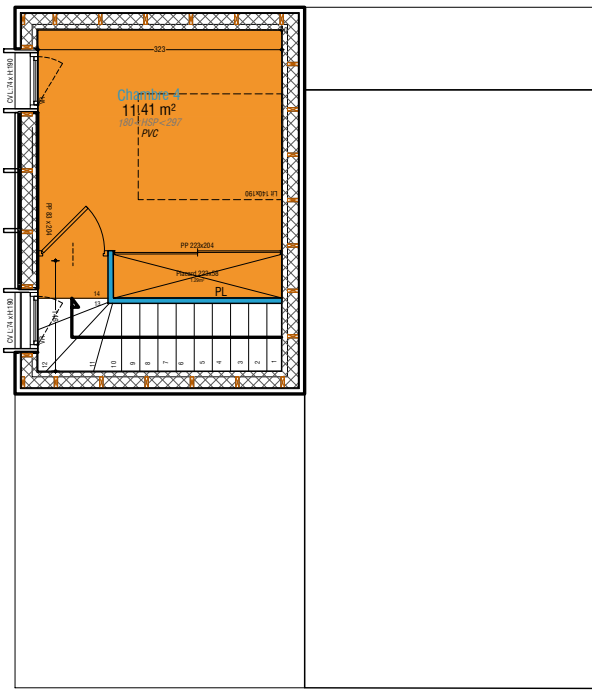


RDC



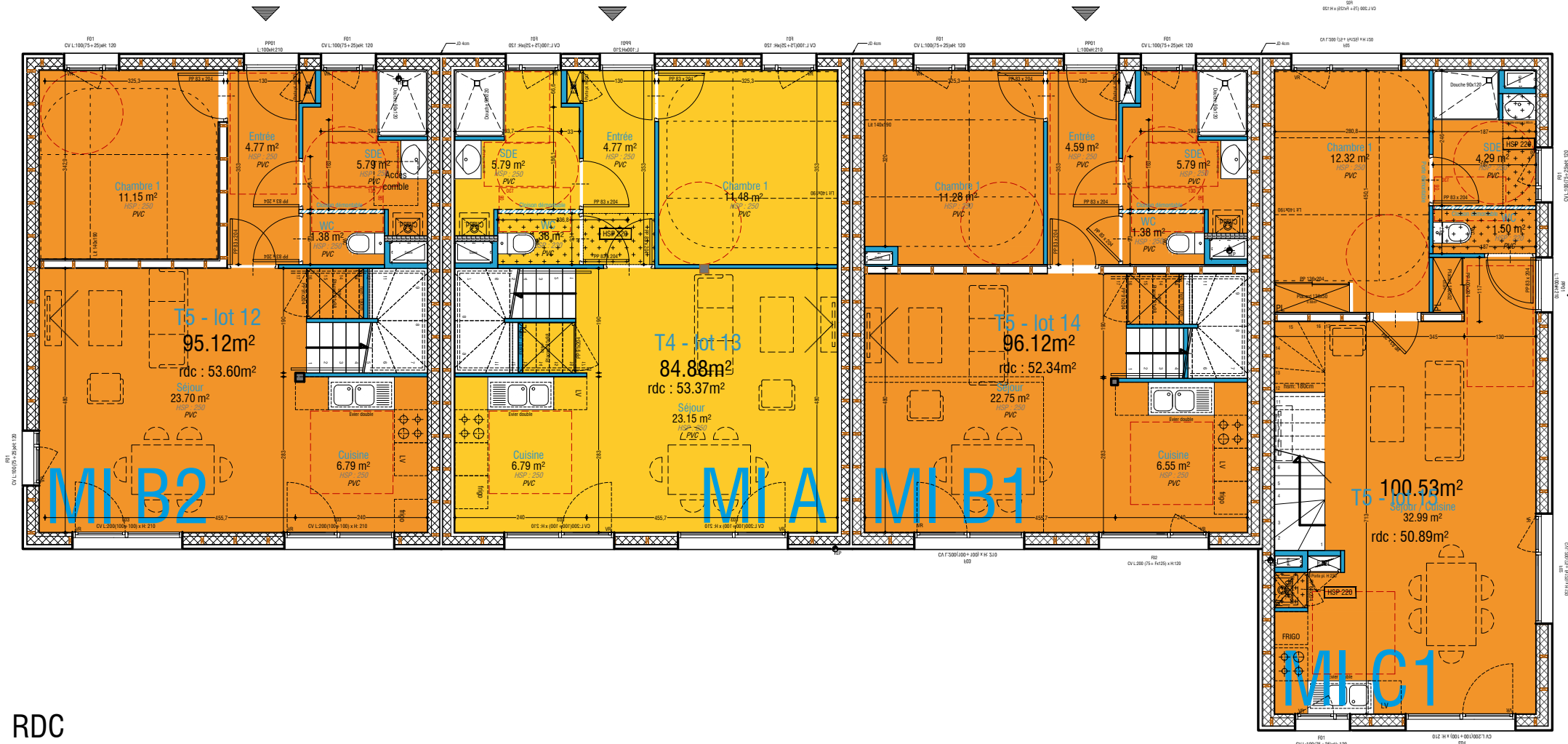
lot MI3 / plans de niveaux - ech: 1/100e





R+2 partiel

R+1



RDC

lot MI4 / plans de niveaux - ech: 1/100e

